

# Tiger N-Type 66TR

## 385-405 Watt

### MONO-FACIAL ALL BLACK

#### N-Type

Positive power tolerance of 0~+3%

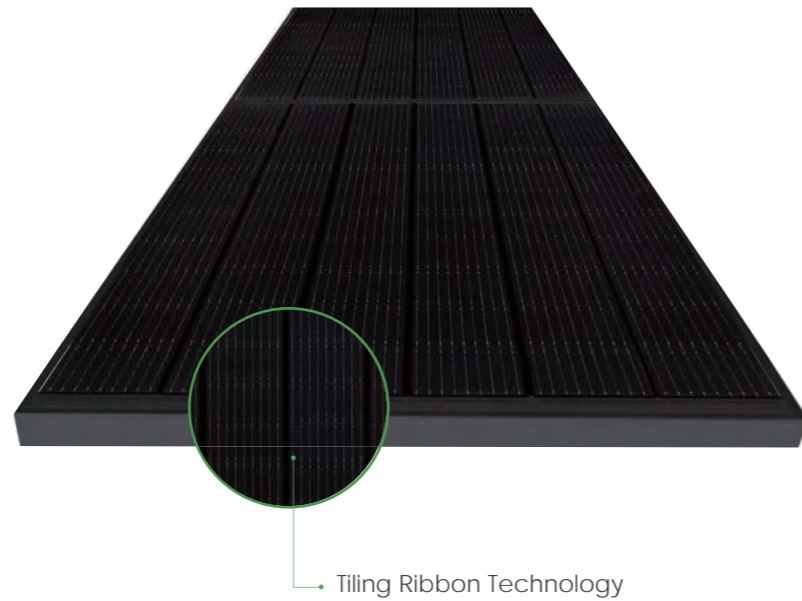
IEC61215(2016), IEC61730(2016)

ISO9001:2015: Quality Management System

ISO14001:2015: Environment Management System

ISO45001:2018

Occupational health and safety management systems



Tiling Ribbon Technology

## Key Features



#### Multi Busbar Technology

Better light trapping and current collection to improve module power output and reliability.



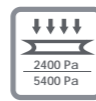
#### Hot 2.0 Technology

The N-type module with Hot 2.0 technology has better reliability and lower LID/LETID.



#### PID Resistance

Excellent Anti-PID performance guarantee via optimized mass-production process and materials control.



#### Enhanced Mechanical Load

Certified to withstand: wind load (2400 Pascal) and snow load (5400 Pascal).

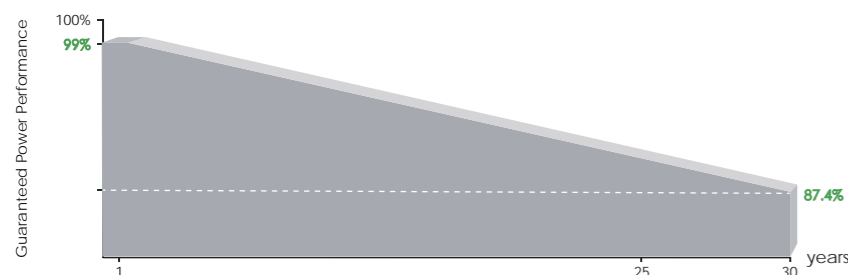


#### Durability Against Extreme Environmental Conditions

High salt mist and ammonia resistance.



## LINEAR PERFORMANCE WARRANTY

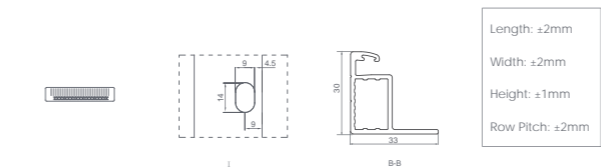
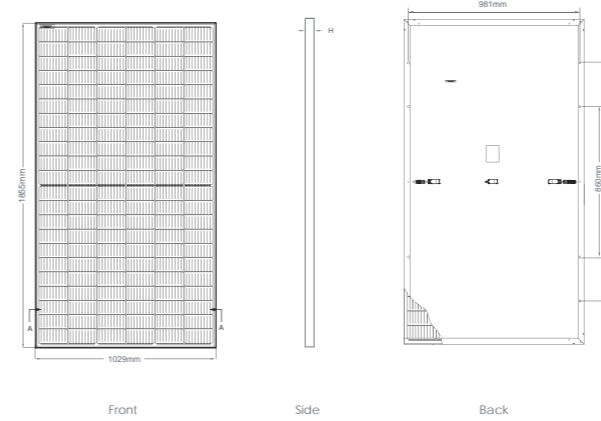


25 Year Product Warranty

30 Year Linear Power Warranty

0.4% Annual Degradation Over 30 years

## Engineering Drawings

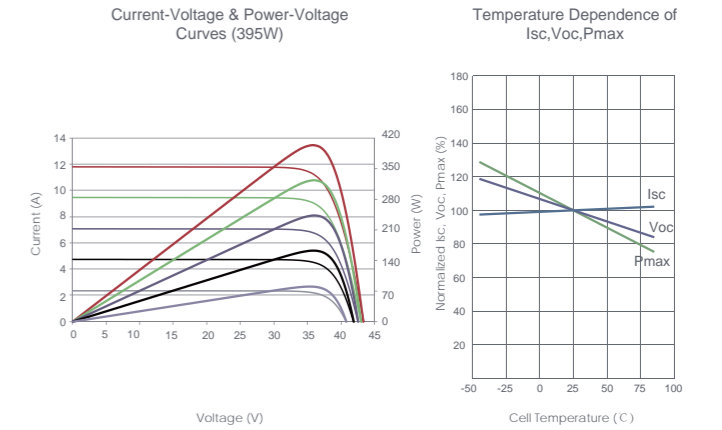


## Packaging Configuration

(Two pallets = One stack)

35pcs/pallets, 70pcs/stack, 840pcs/40'HQ Container

## Electrical Performance & Temperature Dependence



## Mechanical Characteristics

Cell Type	N type Mono-crystalline
No. of cells	132 (2×66)
Dimensions	1855×1029×30mm (73.03×40.51×1.18 inch)
Weight	20.8kg (45.86 lbs)
Front Glass	3.2mm, Anti-Reflection Coating, High Transmission, Low Iron, Tempered Glass
Frame	Anodized Aluminium Alloy
Junction Box	IP68 Rated
Output Cables	TUV 1×4.0mm <sup>2</sup> (+): 290mm, (-): 145mm or Customized Length

## SPECIFICATIONS

Module Type	JKM385N-6RL3-B		JKM390N-6RL3-B		JKM395N-6RL3-B		JKM400N-6RL3-B		JKM405N-6RL3-B	
	STC	NOCT	STC	NOCT	STC	NOCT	STC	NOCT	STC	NOCT
Maximum Power (Pmax)	385Wp	287Wp	390Wp	291Wp	395Wp	295Wp	400Wp	298Wp	405Wp	302Wp
Maximum Power Voltage (Vmp)	37.53V	34.88V	37.72V	35.03V	37.91V	35.19V	38.10V	35.38V	38.28V	35.57V
Maximum Power Current (Imp)	10.26A	8.23A	10.34A	8.30A	10.42A	8.37A	10.50A	8.43A	10.58A	8.49A
Open-circuit Voltage (Voc)	45.14V	42.61V	45.33V	42.79V	45.52V	42.96V	45.71V	43.14V	45.89V	43.31V
Short-circuit Current (Isc)	10.84A	8.76A	10.92A	8.82A	11.00A	8.88A	11.08A	8.95A	11.16A	9.01A
Module Efficiency STC (%)	20.17%		20.43%		20.69%		20.96%		21.22%	
Operating Temperature(°C)	-40 C ~ +85 C									
Maximum System Voltage	1500VDC (IEC)									
Maximum Series Fuse Rating	20A									
Power Tolerance	0~+3%									
Temperature Coefficients of Pmax	-0.34%/C									
Temperature Coefficients of Voc	-0.28%/C									
Temperature Coefficients of Isc	0.048%/C									
Nominal Operating Cell Temperature (NOCT)	45±2 C									

\*STC: ☀ Irradiance 1000W/m<sup>2</sup> 📏 Cell Temperature 25°C ☁ AM=1.5  
 NOCT: ☀ Irradiance 800W/m<sup>2</sup> 📏 Ambient Temperature 20°C ☁ AM=1.5 🌀 Wind Speed 1m/s